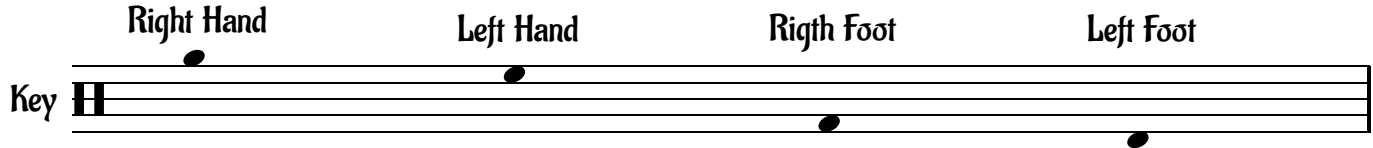


# # 042.04

[stickingpatterns.com](http://stickingpatterns.com)



Use whatever techniques you've been taught.

First gain control, then increase speed.

If you want to achieve good results, work slowly.

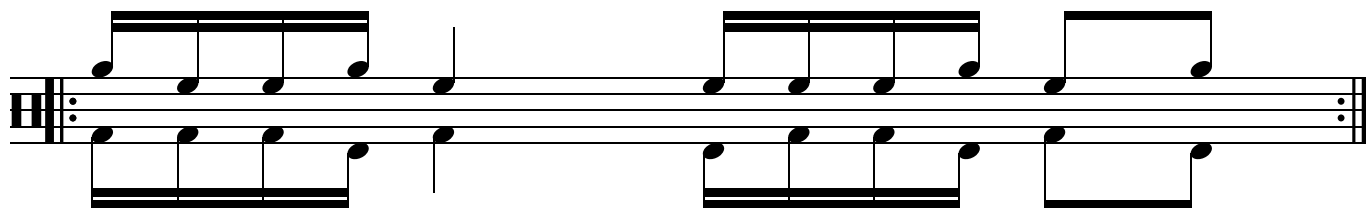
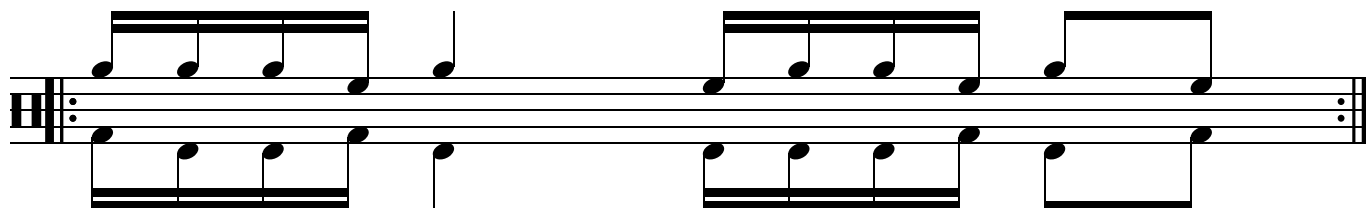
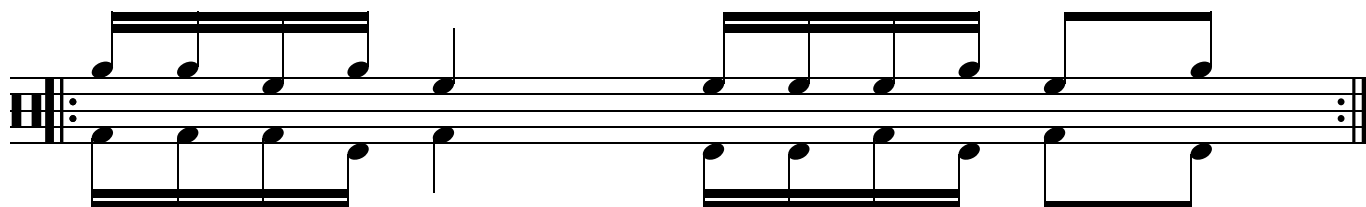
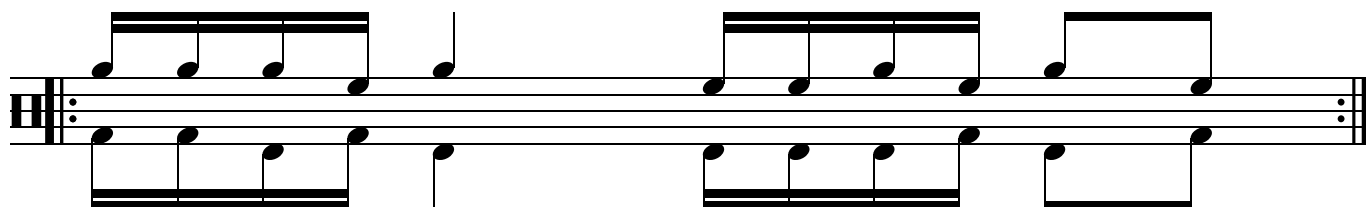
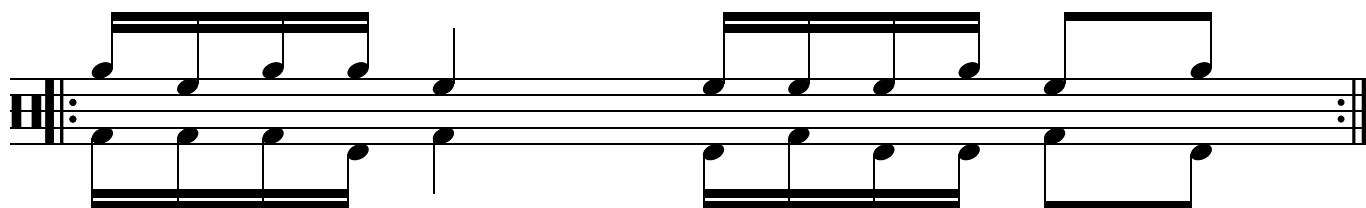
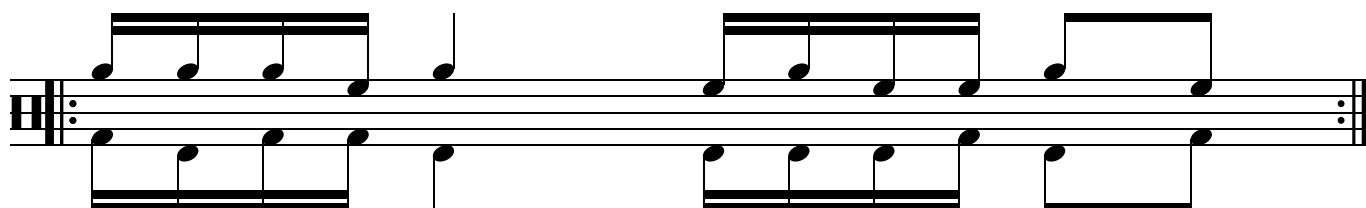
# # 042.04

stickingpatterns.com

This image displays a musical score for a 4-part setting of a hymn tune, likely from the 19th century. The score is written in 4/4 time and consists of six systems, each featuring a vocal line (Soprano, Alto, Tenor, Bass) and a piano accompaniment. The melody is simple and homophonic, using a mix of eighth and quarter notes. The piano accompaniment provides a steady harmonic foundation with chords and moving lines. The score is written in a clean, black-and-white style on a white background.

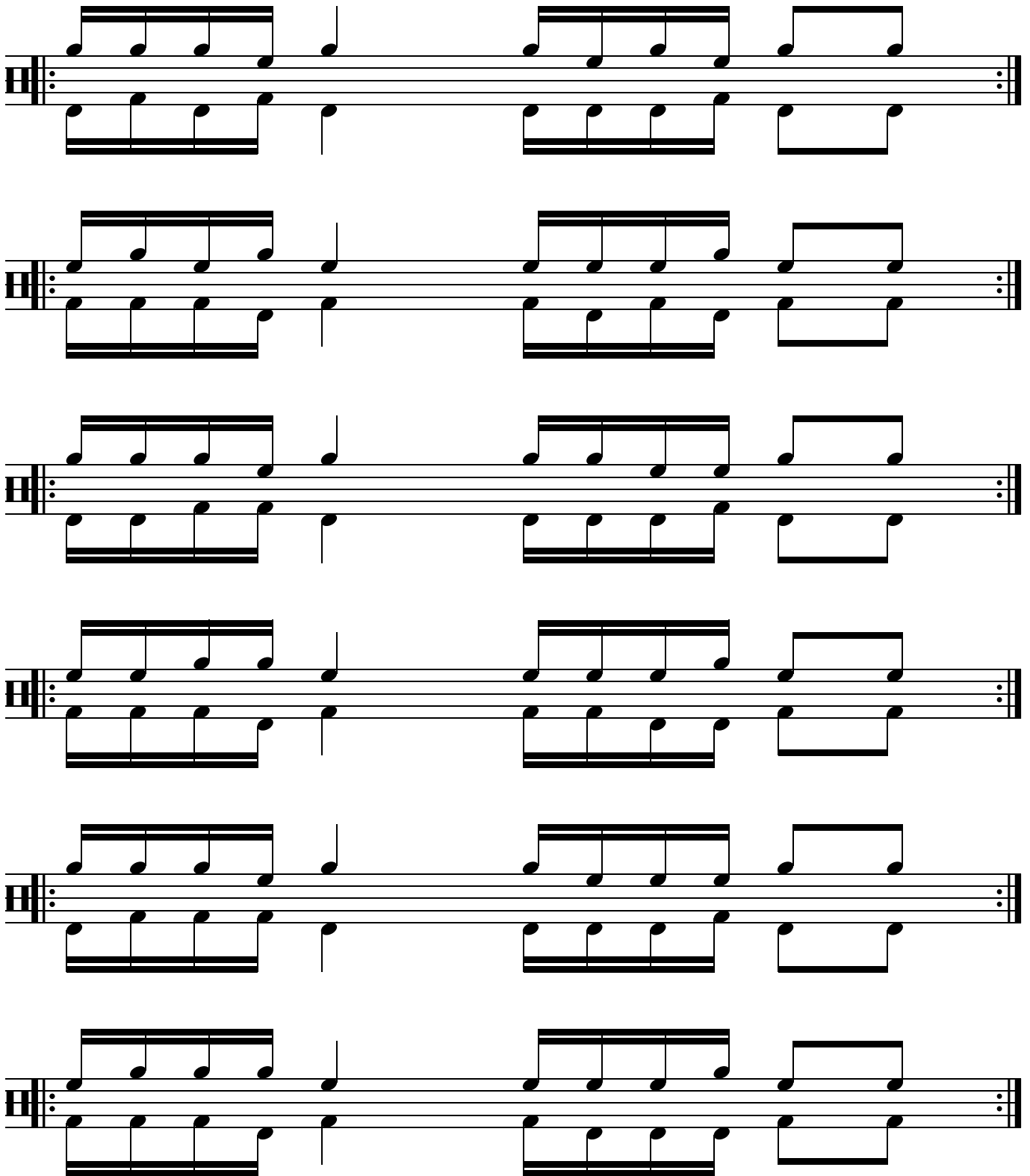
# # 042.04

stickingpatterns.com



# # 042.04

stickingpatterns.com



# # 042.04

stickingpatterns.com

