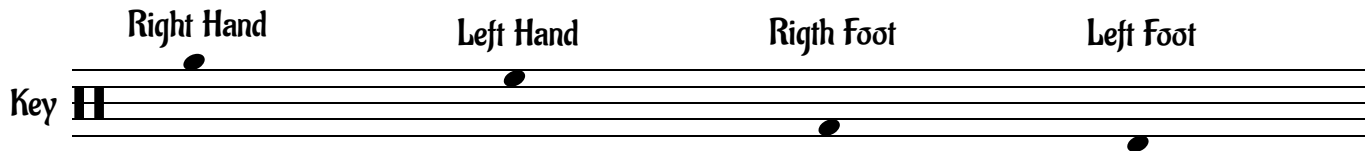


042.03

stickingpatterns.com



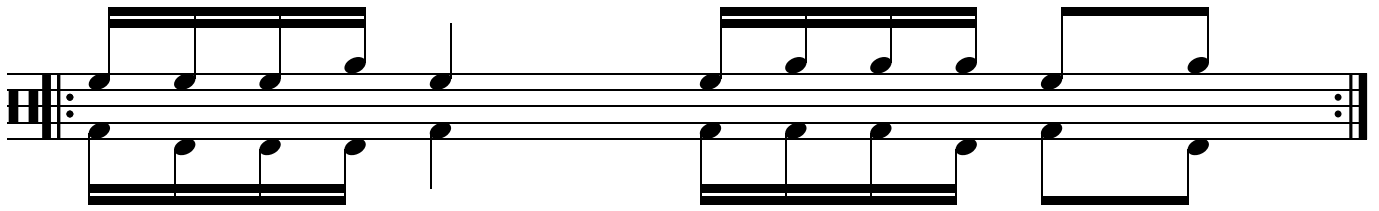
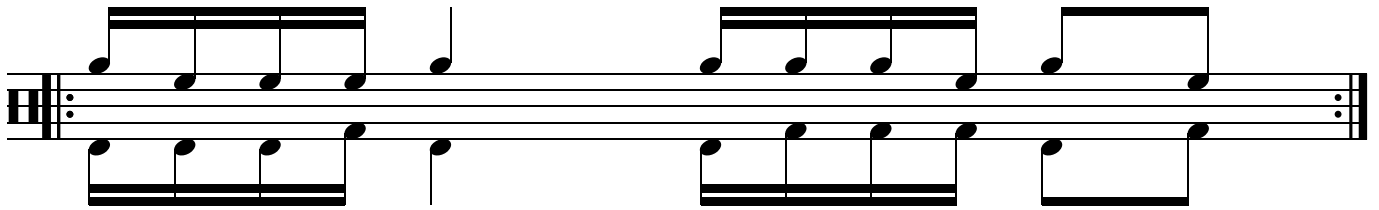
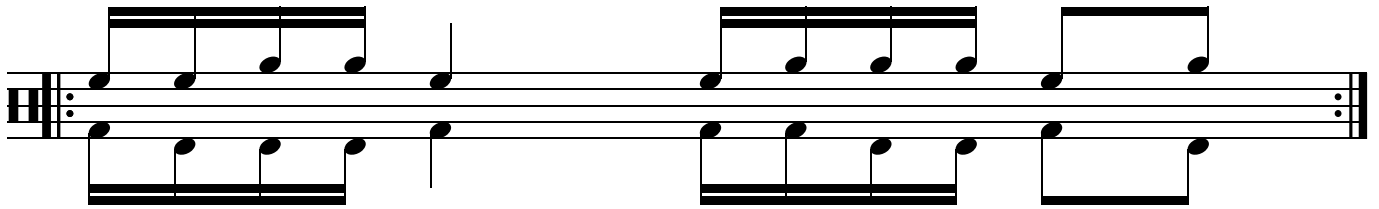
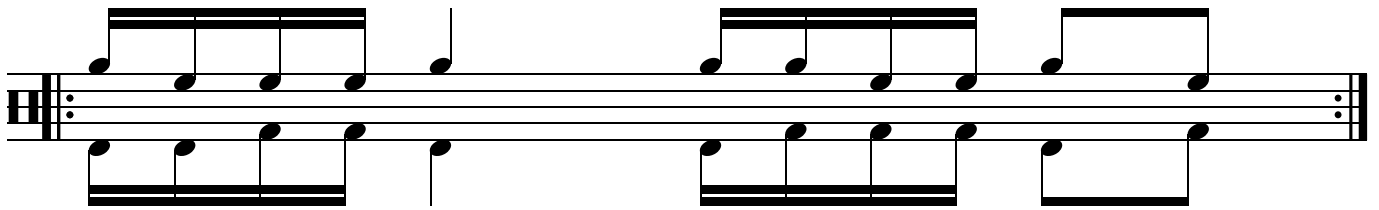
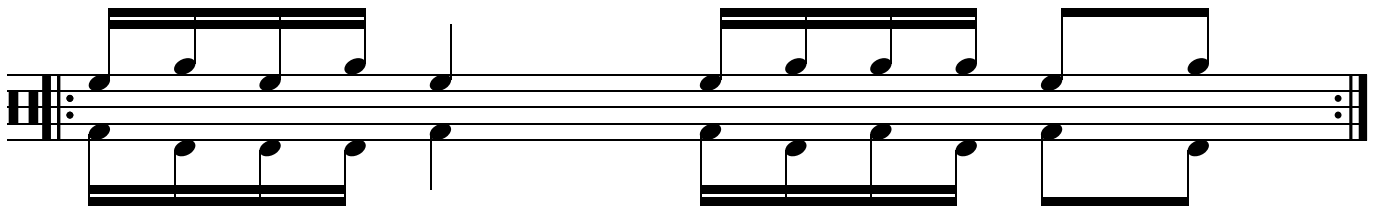
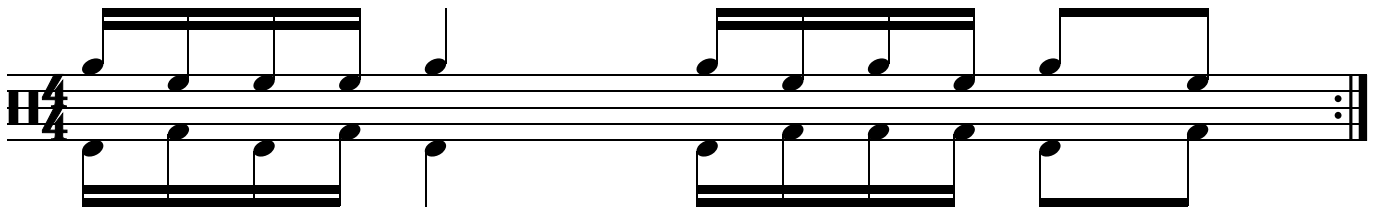
Use whatever techniques you've been taught.

First gain control, then increase speed.

If you want to achieve good results, work slowly.

042.03

stickingpatterns.com



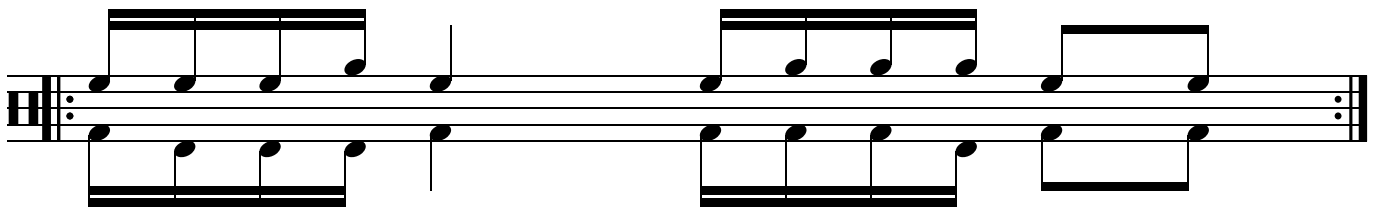
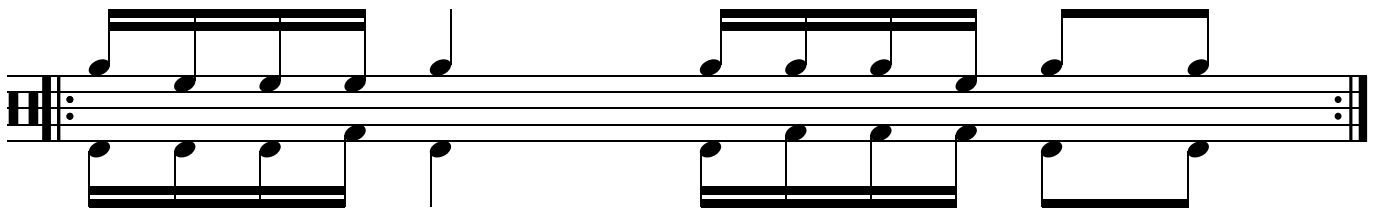
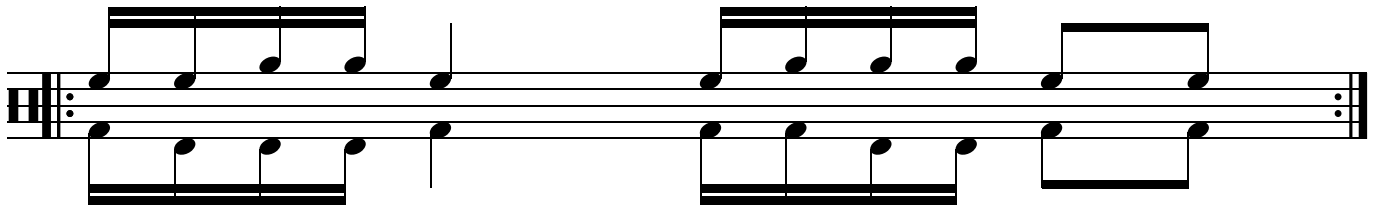
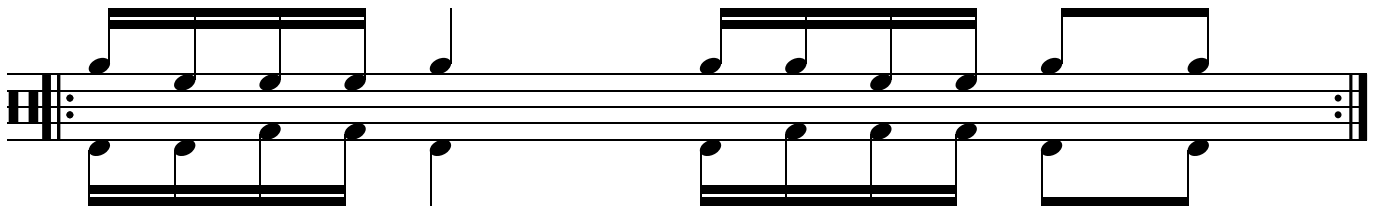
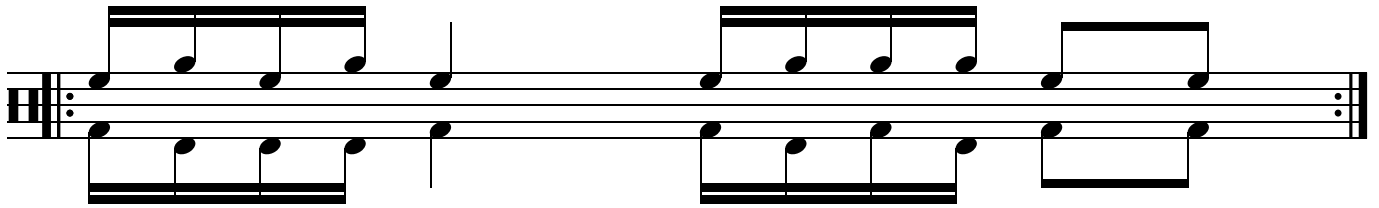
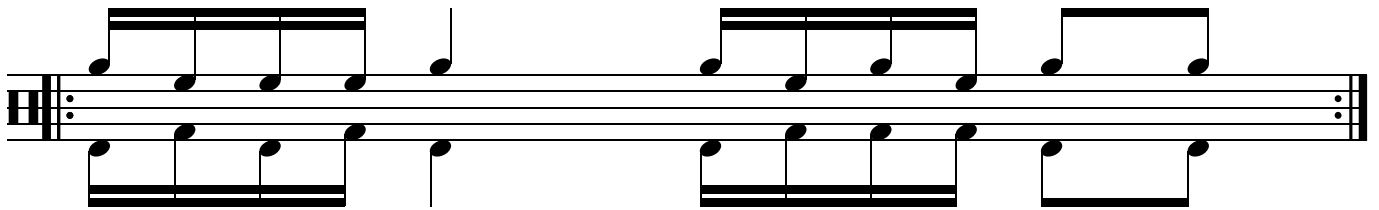
042.03

stickingpatterns.com

The image displays a musical score for guitar, organized into six systems. Each system consists of two staves: a treble staff (top) and a bass staff (bottom), connected by a brace on the left. The notation is in black ink on a white background. The music is written in a style that suggests a specific rhythm, with notes and rests clearly marked. The score is divided into two main sections by a double bar line, with three systems of music in each section.

042.03

stickingpatterns.com



042.03

stickingpatterns.com

