

032.02

stickingpatterns.com



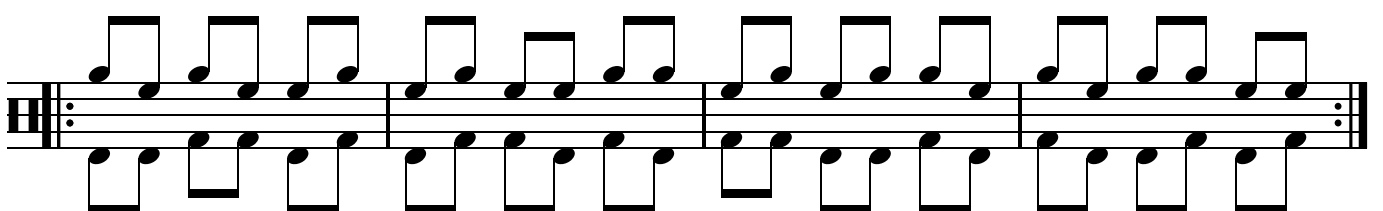
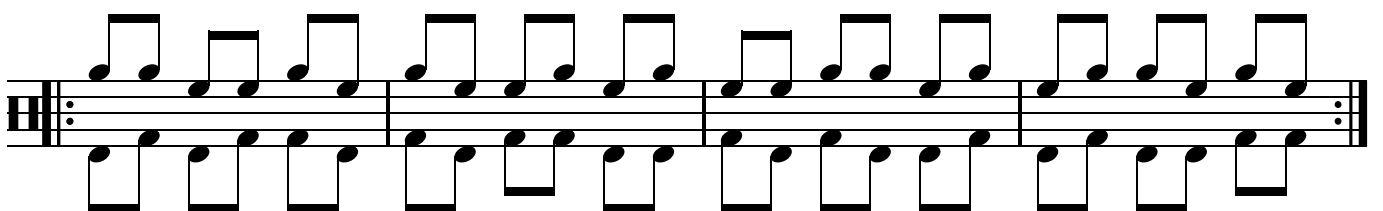
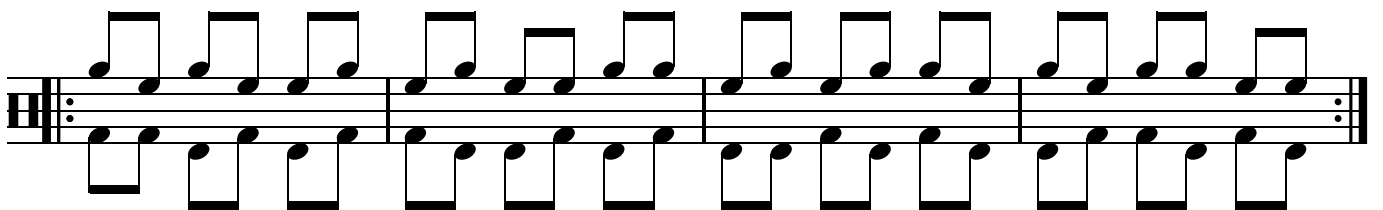
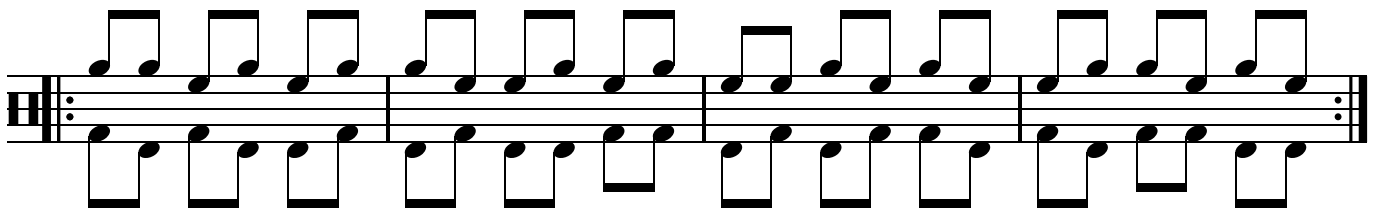
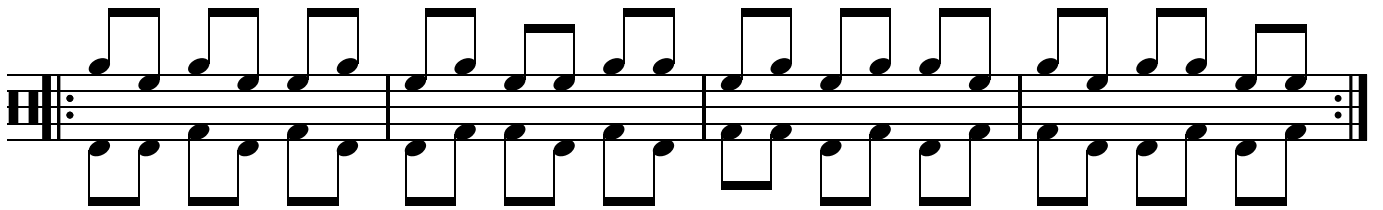
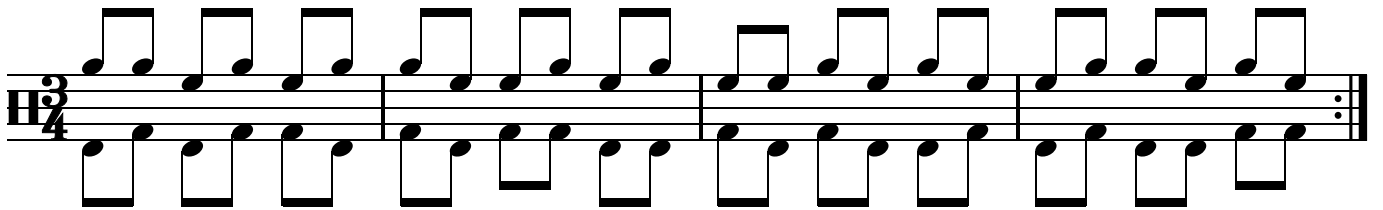
Use whatever techniques you've been taught.

First gain control, then increase speed.

If you want to achieve good results, work slowly.

032.02

stickingpatterns.com



032.02

stickingpatterns.com

The image displays two staves of musical notation, each representing a different sticking pattern. Each staff begins with a treble clef and a double bar line. The notation consists of a sequence of rhythmic patterns, where each pattern is represented by a pair of notes (one above and one below the staff) connected by a vertical line. The patterns are arranged in a sequence of four measures per staff, with a double bar line at the end of each measure. The patterns are as follows:

- Staff 1:
 - Measure 1: Two eighth notes, one on the upper staff and one on the lower staff.
 - Measure 2: Two eighth notes, one on the upper staff and one on the lower staff.
 - Measure 3: Two eighth notes, one on the upper staff and one on the lower staff.
 - Measure 4: Two eighth notes, one on the upper staff and one on the lower staff.
- Staff 2:
 - Measure 1: Two eighth notes, one on the upper staff and one on the lower staff.
 - Measure 2: Two eighth notes, one on the upper staff and one on the lower staff.
 - Measure 3: Two eighth notes, one on the upper staff and one on the lower staff.
 - Measure 4: Two eighth notes, one on the upper staff and one on the lower staff.