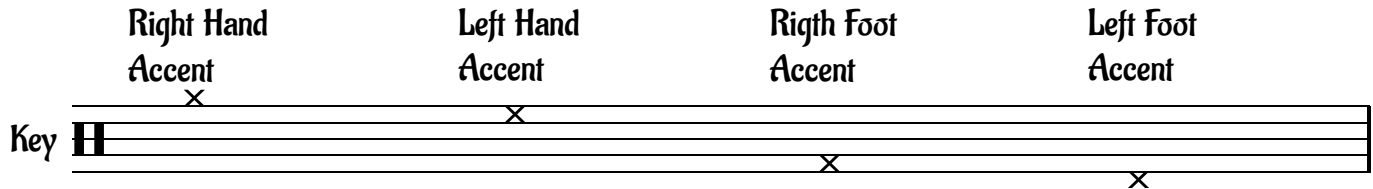
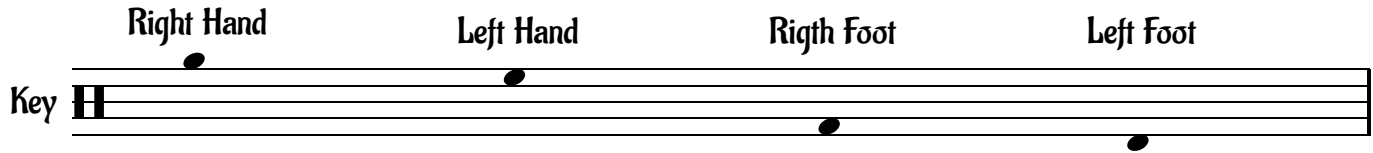


029.12

stickingpatterns.com



Use whatever techniques you've been taught.
First gain control, then increase speed.
If you want to achieve good results, work slowly.

029.12

stickingpatterns.com

The first row of musical notation consists of four measures. The top staff is in treble clef with a 4/4 time signature. The bottom staff is in bass clef. The notation uses eighth notes and rests, with 'x' marks indicating specific sticking patterns. The first measure has a quarter rest on the top staff and eighth notes on the bottom staff. The second measure has eighth notes on both staves. The third measure has a quarter rest on the top staff and eighth notes on the bottom staff. The fourth measure has eighth notes on both staves.

The second row of musical notation consists of four measures. The top staff is in treble clef with a 4/4 time signature. The bottom staff is in bass clef. The notation uses eighth notes and rests, with 'x' marks indicating specific sticking patterns. The first measure has eighth notes on the top staff and a quarter rest on the bottom staff. The second measure has eighth notes on the top staff and eighth notes on the bottom staff. The third measure has eighth notes on the top staff and eighth notes on the bottom staff. The fourth measure has eighth notes on the top staff and eighth notes on the bottom staff.

The third row of musical notation consists of four measures. The top staff is in treble clef with a 4/4 time signature. The bottom staff is in bass clef. The notation uses eighth notes and rests, with 'x' marks indicating specific sticking patterns. The first measure has eighth notes on the top staff and eighth notes on the bottom staff. The second measure has eighth notes on the top staff and eighth notes on the bottom staff. The third measure has eighth notes on the top staff and eighth notes on the bottom staff. The fourth measure has eighth notes on the top staff and eighth notes on the bottom staff.

The fourth row of musical notation consists of four measures. The top staff is in treble clef with a 4/4 time signature. The bottom staff is in bass clef. The notation uses eighth notes and rests, with 'x' marks indicating specific sticking patterns. The first measure has eighth notes on the top staff and eighth notes on the bottom staff. The second measure has eighth notes on the top staff and eighth notes on the bottom staff. The third measure has eighth notes on the top staff and eighth notes on the bottom staff. The fourth measure has eighth notes on the top staff and eighth notes on the bottom staff.

The fifth row of musical notation consists of four measures. The top staff is in treble clef with a 4/4 time signature. The bottom staff is in bass clef. The notation uses eighth notes and rests, with 'x' marks indicating specific sticking patterns. The first measure has eighth notes on the top staff and eighth notes on the bottom staff. The second measure has eighth notes on the top staff and eighth notes on the bottom staff. The third measure has eighth notes on the top staff and eighth notes on the bottom staff. The fourth measure has eighth notes on the top staff and eighth notes on the bottom staff.

The sixth row of musical notation consists of four measures. The top staff is in treble clef with a 4/4 time signature. The bottom staff is in bass clef. The notation uses eighth notes and rests, with 'x' marks indicating specific sticking patterns. The first measure has eighth notes on the top staff and eighth notes on the bottom staff. The second measure has eighth notes on the top staff and eighth notes on the bottom staff. The third measure has eighth notes on the top staff and eighth notes on the bottom staff. The fourth measure has eighth notes on the top staff and eighth notes on the bottom staff.

029.12

stickingpatterns.com

