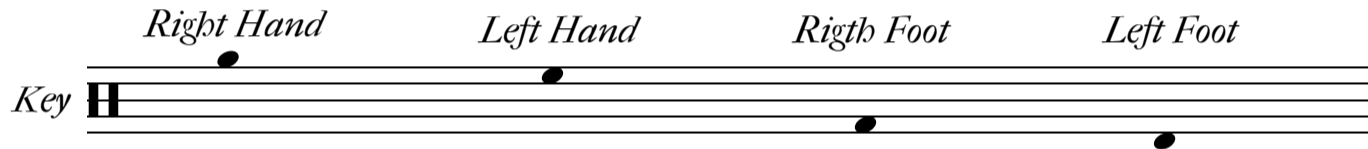


2

008.03



First gain control, then increase speed.

Use whatever techniques you've been taught.

If you want to achieve good results, work slowly.

008.03

System 1: Treble clef with a 3/4 time signature. The top staff contains six groups of three eighth notes, each with an accent (>) and a bracket above it. The bottom staff contains six groups of three eighth notes, each with a bracket below it. A bar line is located after the third group.

System 2: Treble clef. The top staff contains six groups of three eighth notes, each with an accent (>) and a bracket above it. The bottom staff contains six groups of three eighth notes, each with a bracket below it. A bar line is located after the third group.

System 3: Treble clef. The top staff contains six groups of three eighth notes, each with an accent (>) and a bracket above it. The bottom staff contains six groups of three eighth notes, each with a bracket below it. A bar line is located after the third group.

System 4: Treble clef. The top staff contains six groups of three eighth notes, each with an accent (>) and a bracket above it. The bottom staff contains six groups of three eighth notes, each with a bracket below it. A bar line is located after the third group.

System 5: Treble clef. The top staff contains six groups of three eighth notes, each with an accent (>) and a bracket above it. The bottom staff contains six groups of three eighth notes, each with a bracket below it. A bar line is located after the third group, and the system ends with a double bar line and repeat dots.

008.03

3/4