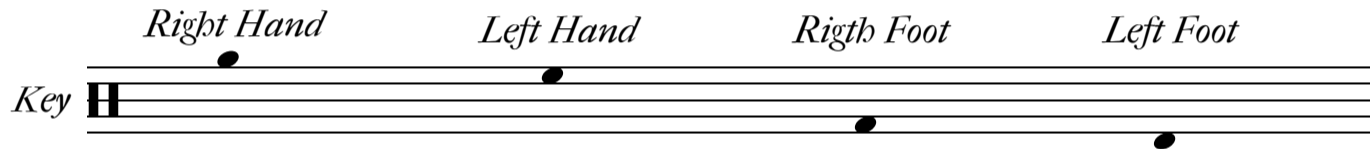


2

008.02



First gain control, then increase speed.

Use whatever techniques you've been taught.

If you want to achieve good results, work slowly.

008.02

System 1: A musical staff system in 3/4 time. The top staff contains six groups of three eighth notes, each with a bracket and the number '3' above it. The bottom staff contains six groups of three eighth notes, each with a bracket and the number '3' below it. A treble clef is on the left, and a 3/4 time signature is below it.

System 2: A musical staff system in 3/4 time. The top staff contains six groups of three eighth notes, each with a bracket and the number '3' above it. The bottom staff contains six groups of three eighth notes, each with a bracket and the number '3' below it. A treble clef is on the left.

System 3: A musical staff system in 3/4 time. The top staff contains six groups of three eighth notes, each with a bracket and the number '3' above it. The bottom staff contains six groups of three eighth notes, each with a bracket and the number '3' below it. A treble clef is on the left.

System 4: A musical staff system in 3/4 time. The top staff contains six groups of three eighth notes, each with a bracket and the number '3' above it. The bottom staff contains six groups of three eighth notes, each with a bracket and the number '3' below it. A treble clef is on the left.

System 5: A musical staff system in 3/4 time. The top staff contains six groups of three eighth notes, each with a bracket and the number '3' above it. The bottom staff contains six groups of three eighth notes, each with a bracket and the number '3' below it. A treble clef is on the left, and a double bar line with repeat dots is on the right.

008.02

3/4

3 3 3 3 3 3

3 3 3 3 3 3

3 3 3 3 3 3

3 3 3 3 3 3

3 3 3 3 3 3