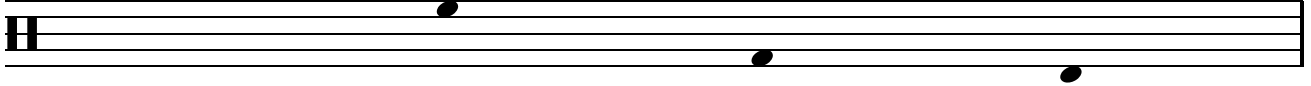


# # 003.06

stickingpatterns.com

Right Hand                      Left Hand                      Righth Foot                      Left Foot

Key 

First gain control, then increase speed.  
Use whatever techniques you've been taught.  
If you want to achieve good results, work slowly.



# # 003.06

stickingpatterns.com

The image displays six systems of musical notation for a drum set. Each system consists of two staves: the top staff is for the snare drum and the bottom staff is for the bass drum. The notation is as follows:

- System 1:** Snare line: quarter notes G4, A4, B4, C5, B4, A4, G4, F4, E4, D4. Bass line: quarter notes G2, A2, B2, C3, B2, A2, G2, F2, E2, D2.
- System 2:** Snare line: quarter notes G4, A4, B4, C5, B4, A4, G4, F4, E4, D4. Bass line: quarter notes G2, A2, B2, C3, B2, A2, G2, F2, E2, D2.
- System 3:** Snare line: quarter notes G4, A4, B4, C5, B4, A4, G4, F4, E4, D4. Bass line: quarter notes G2, A2, B2, C3, B2, A2, G2, F2, E2, D2.
- System 4:** Snare line: quarter notes G4, A4, B4, C5, B4, A4, G4, F4, E4, D4. Bass line: quarter notes G2, A2, B2, C3, B2, A2, G2, F2, E2, D2.
- System 5:** Snare line: quarter notes G4, A4, B4, C5, B4, A4, G4, F4, E4, D4. Bass line: quarter notes G2, A2, B2, C3, B2, A2, G2, F2, E2, D2.
- System 6:** Snare line: quarter notes G4, A4, B4, C5, B4, A4, G4, F4, E4, D4. Bass line: quarter notes G2, A4, B4, C5, B4, A4, G4, F4, E4, D4.

# # 003.06

stickingpatterns.com

The image displays six systems of musical notation for a drum set. Each system consists of two staves: the top staff is for the snare drum and the bottom staff is for the bass drum. The notation is as follows:

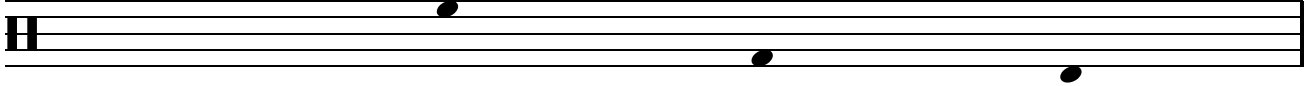
- System 1:** Snare line has notes on the 1st, 2nd, 3rd, 4th, 5th, 6th, 7th, and 8th measures. Bass drum line has notes on every measure.
- System 2:** Snare line has notes on the 1st, 2nd, 3rd, 4th, 5th, 6th, 7th, and 8th measures. Bass drum line has notes on every measure.
- System 3:** Snare line has notes on the 1st, 2nd, 3rd, 4th, 5th, 6th, 7th, and 8th measures. Bass drum line has notes on every measure.
- System 4:** Snare line has notes on the 1st, 2nd, 3rd, 4th, 5th, 6th, 7th, and 8th measures. Bass drum line has notes on every measure.
- System 5:** Snare line has notes on the 1st, 2nd, 3rd, 4th, 5th, 6th, 7th, and 8th measures. Bass drum line has notes on every measure.
- System 6:** Snare line has notes on the 1st, 2nd, 3rd, 4th, 5th, 6th, 7th, 8th, 9th, 10th, 11th, 12th, 13th, 14th, 15th, and 16th measures. Bass drum line has notes on every measure.



# # 003.07

stickingpatterns.com

Right Hand                      Left Hand                      Righth Foot                      Left Foot

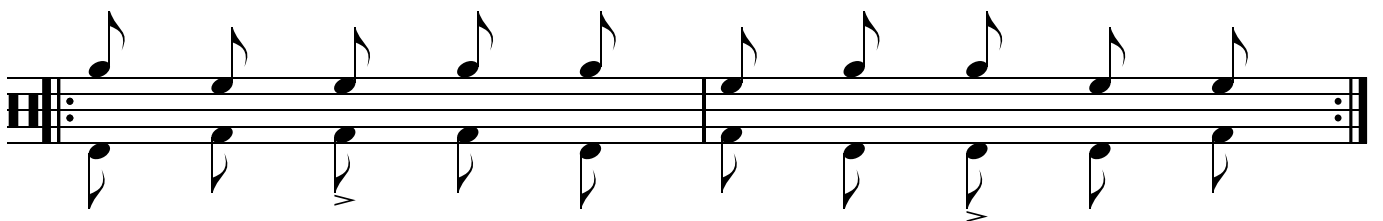
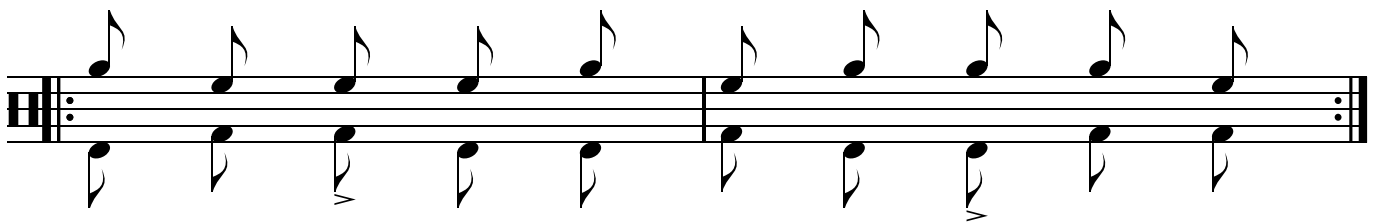
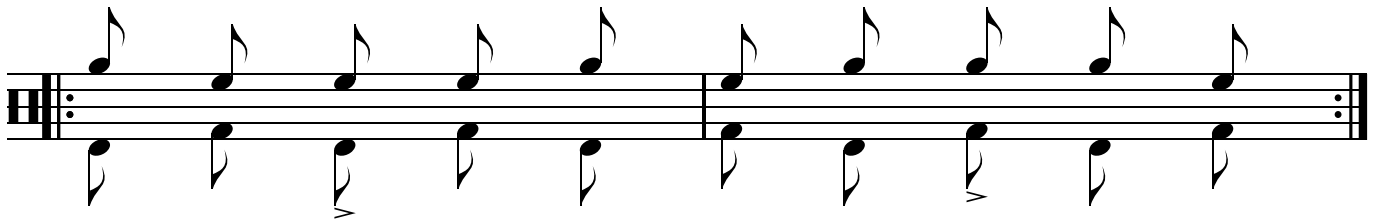
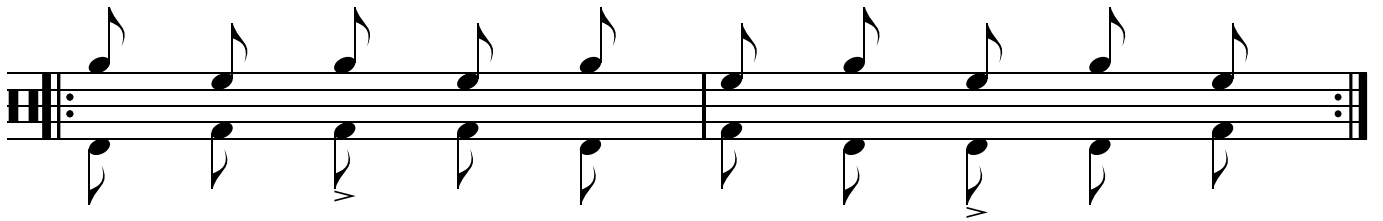
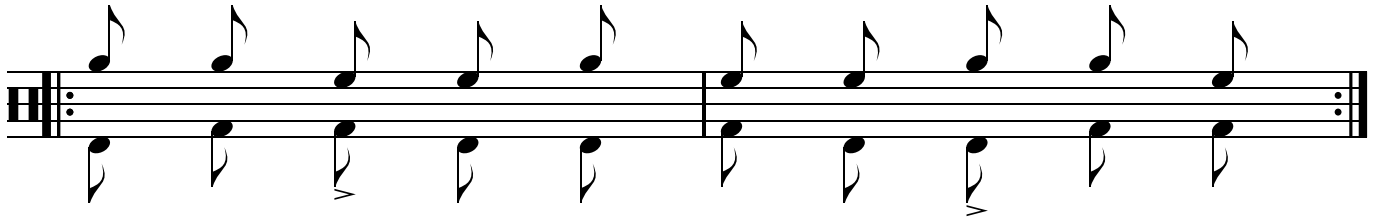
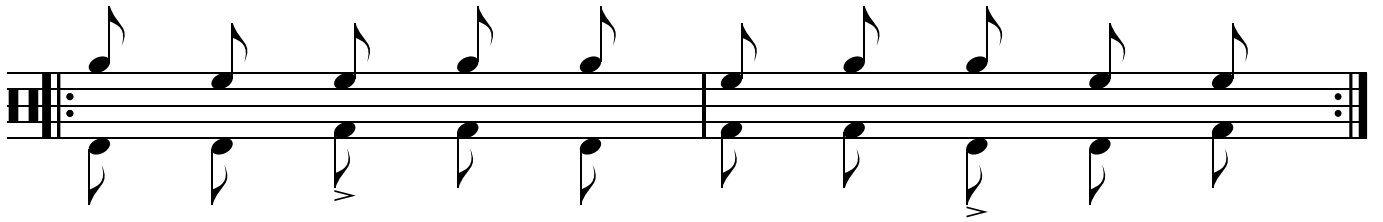
Key 

First gain control, then increase speed.  
Use whatever techniques you've been taught.  
If you want to achieve good results, work slowly.



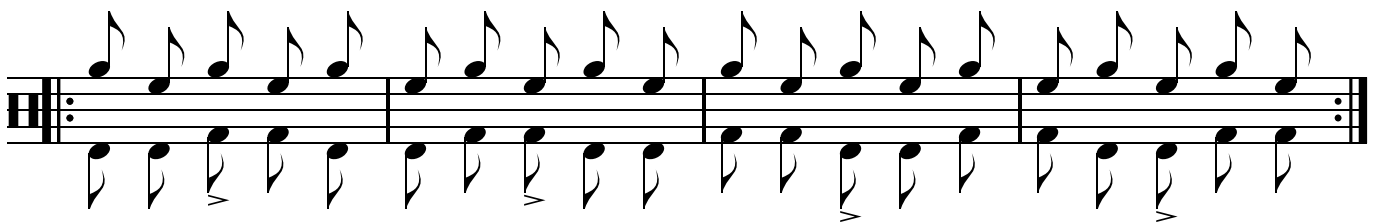
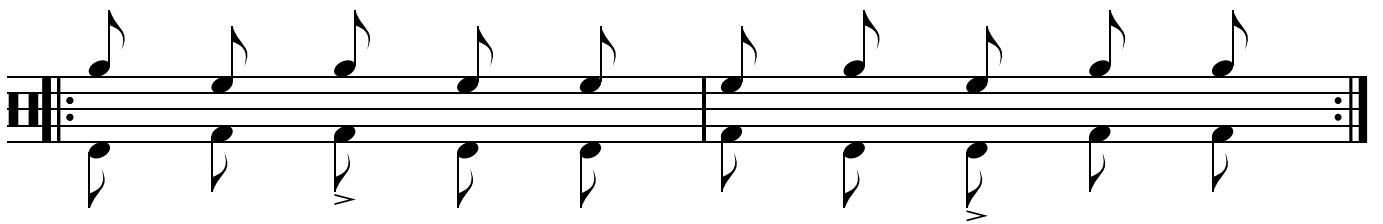
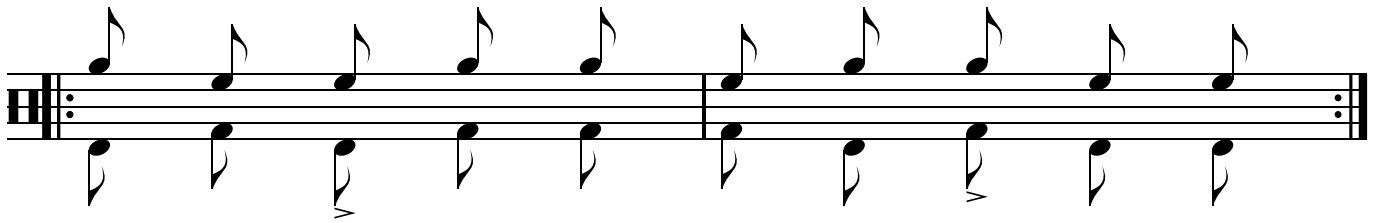
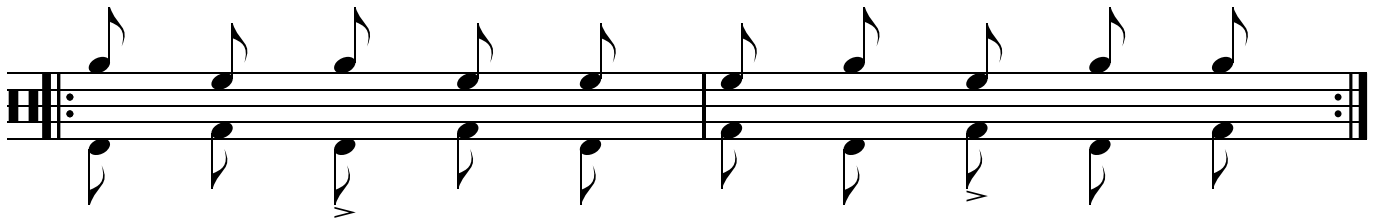
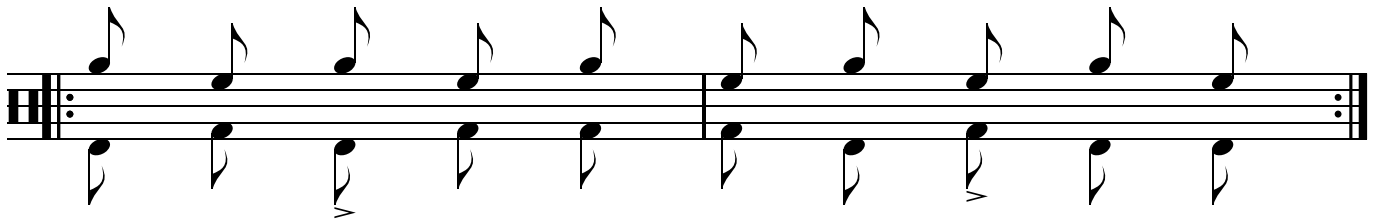
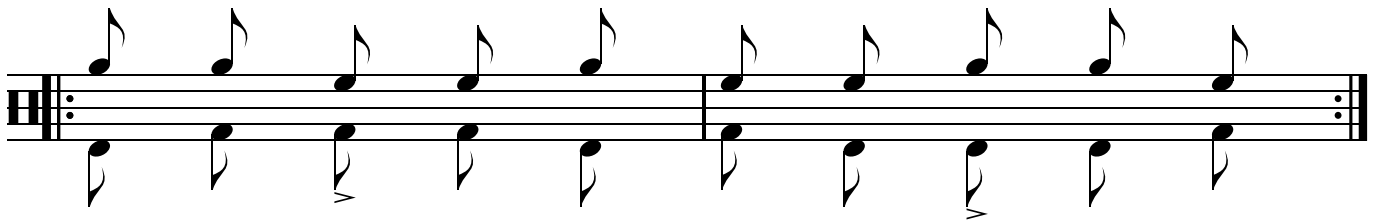
# # 003.07

stickingpatterns.com



# # 003.07

stickingpatterns.com



# # 003.07

stickingpatterns.com

System 1: A musical staff with a treble clef and a key signature of one sharp (F#). The melody consists of eighth notes: G4, A4, B4, C5, B4, A4, G4, F#4, G4, A4, B4, C5, B4, A4, G4, F#4, G4, A4, B4, C5. The bass line consists of eighth notes: G2, A2, B2, C3, B2, A2, G2, F#2, G2, A2, B2, C3, B2, A2, G2, F#2, G2, A2, B2, C3. There are two measures in this system.

System 2: A musical staff with a treble clef and a key signature of one sharp (F#). The melody consists of eighth notes: G4, A4, B4, C5, B4, A4, G4, F#4, G4, A4, B4, C5, B4, A4, G4, F#4, G4, A4, B4, C5. The bass line consists of eighth notes: G2, A2, B2, C3, B2, A2, G2, F#2, G2, A2, B2, C3, B2, A2, G2, F#2, G2, A2, B2, C3. There are two measures in this system.

System 3: A musical staff with a treble clef and a key signature of one sharp (F#). The melody consists of eighth notes: G4, A4, B4, C5, B4, A4, G4, F#4, G4, A4, B4, C5, B4, A4, G4, F#4, G4, A4, B4, C5. The bass line consists of eighth notes: G2, A2, B2, C3, B2, A2, G2, F#2, G2, A2, B2, C3, B2, A2, G2, F#2, G2, A2, B2, C3. There are two measures in this system.

System 4: A musical staff with a treble clef and a key signature of one sharp (F#). The melody consists of eighth notes: G4, A4, B4, C5, B4, A4, G4, F#4, G4, A4, B4, C5, B4, A4, G4, F#4, G4, A4, B4, C5. The bass line consists of eighth notes: G2, A2, B2, C3, B2, A2, G2, F#2, G2, A2, B2, C3, B2, A2, G2, F#2, G2, A2, B2, C3. There are two measures in this system.

System 5: A musical staff with a treble clef and a key signature of one sharp (F#). The melody consists of eighth notes: G4, A4, B4, C5, B4, A4, G4, F#4, G4, A4, B4, C5, B4, A4, G4, F#4, G4, A4, B4, C5. The bass line consists of eighth notes: G2, A2, B2, C3, B2, A2, G2, F#2, G2, A2, B2, C3, B2, A2, G2, F#2, G2, A2, B2, C3. There are two measures in this system.