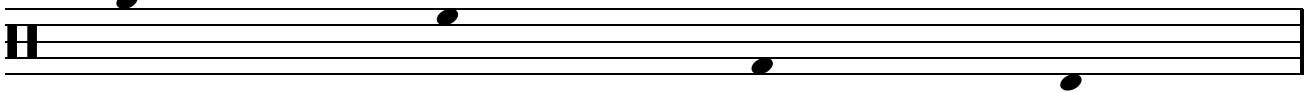


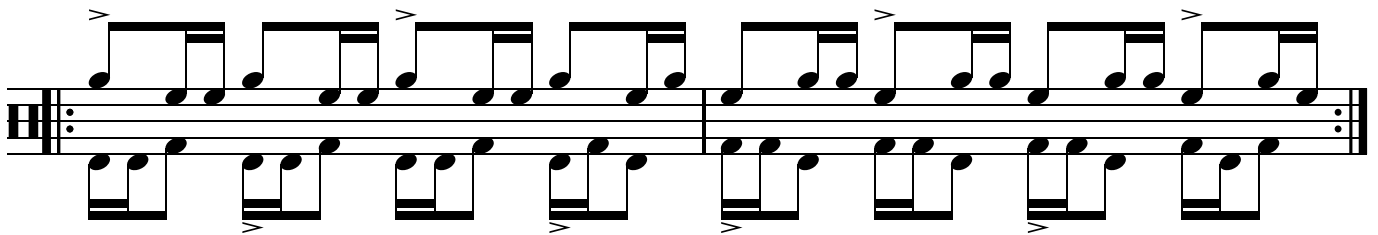
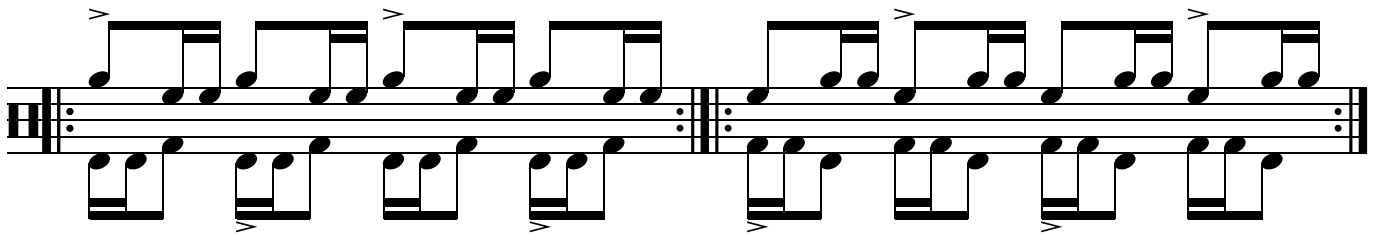
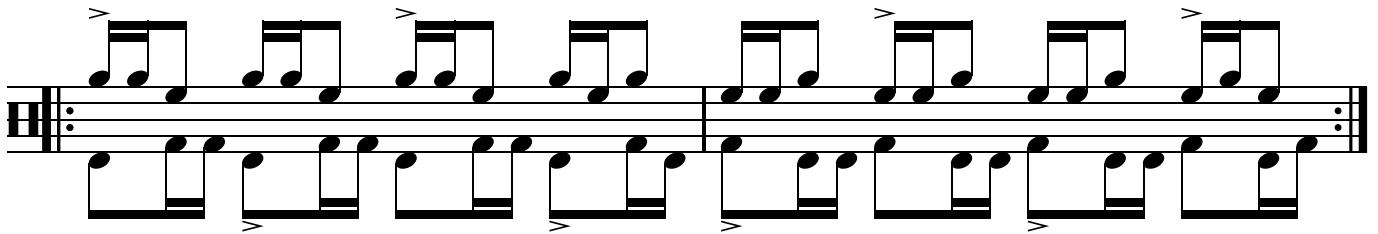
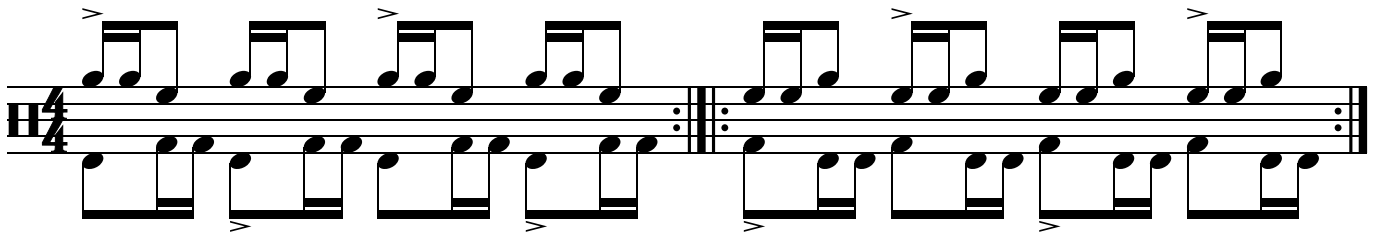
002.02

stickingpatterns.com

Right Hand Left Hand Righth Foot Left Foot

Key 

First gain control, then increase speed.
Use whatever techniques you've been taught.
If you want to achieve good results, work slowly.



002.02

stickingpatterns.com

System 1: A pair of staves. The top staff contains four measures of eighth-note pairs with accents (>) on the first note of each pair. The bottom staff contains four measures of eighth-note pairs with accents (>) on the second note of each pair. A double bar line with repeat dots is located after the second measure.

System 2: A pair of staves. The top staff contains four measures of eighth-note pairs with accents (>) on the first note of each pair. The bottom staff contains four measures of eighth-note pairs with accents (>) on the second note of each pair. A double bar line with repeat dots is located after the second measure.

System 3: A pair of staves. The top staff contains four measures of eighth-note pairs with accents (>) on the first note of each pair. The bottom staff contains four measures of eighth-note pairs with accents (>) on the second note of each pair. A double bar line with repeat dots is located after the second measure.

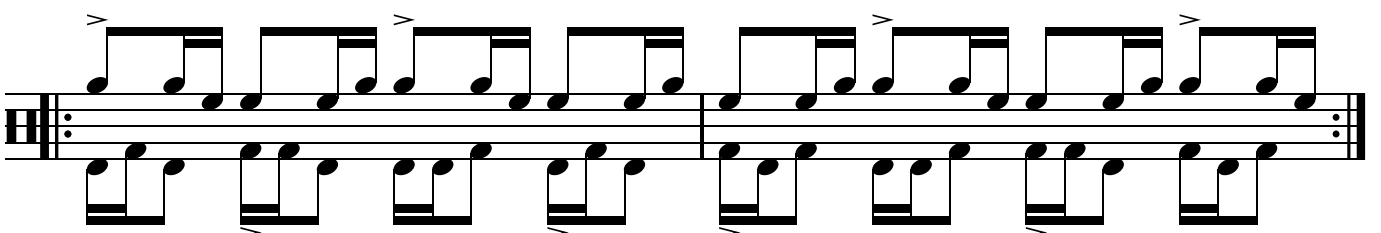
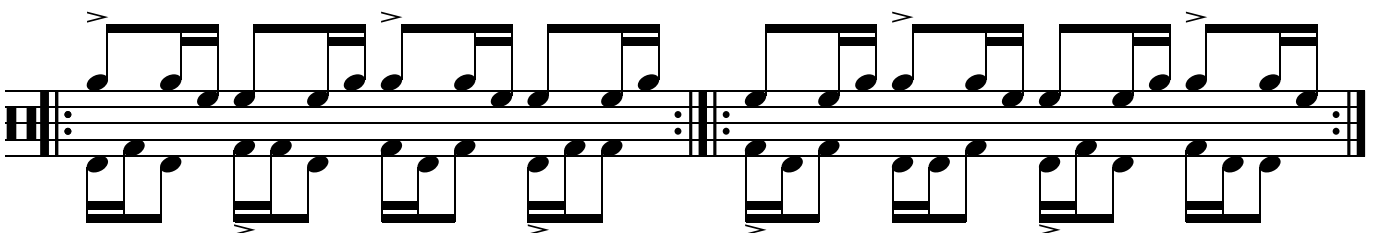
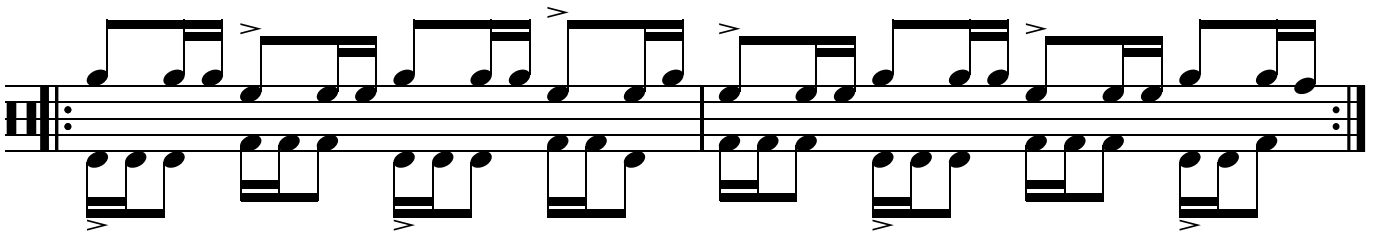
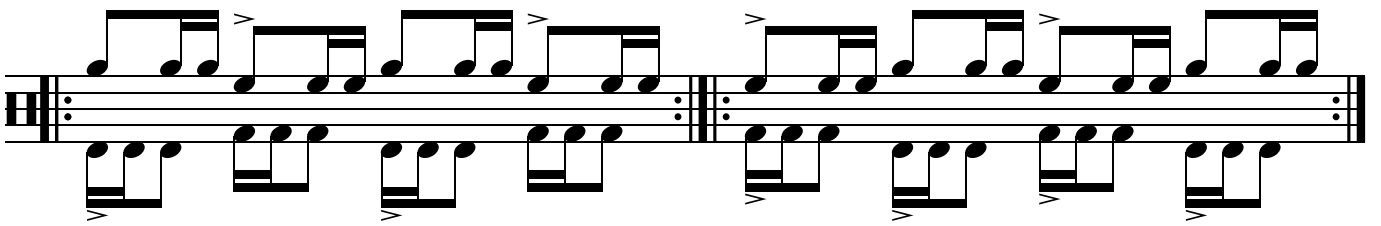
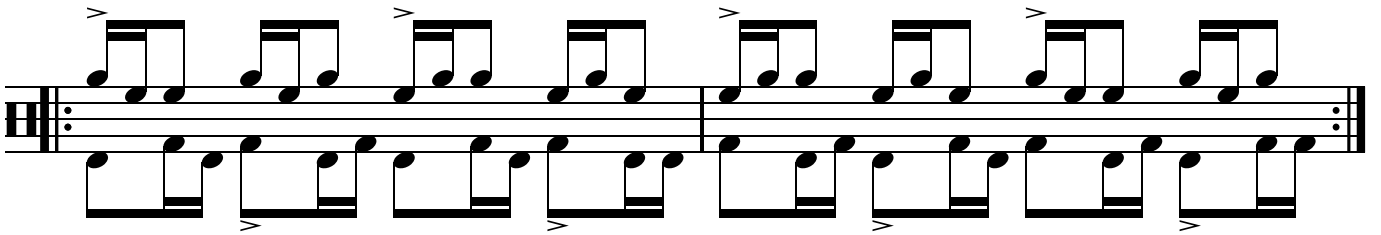
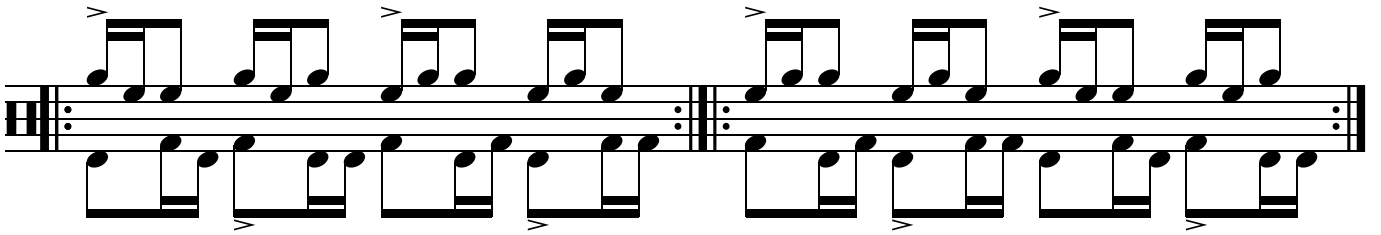
System 4: A pair of staves. The top staff contains four measures of eighth-note pairs with accents (>) on the first note of each pair. The bottom staff contains four measures of eighth-note pairs with accents (>) on the second note of each pair. A double bar line with repeat dots is located after the second measure.

System 5: A pair of staves. The top staff contains four measures of eighth-note pairs with accents (>) on the first note of each pair. The bottom staff contains four measures of eighth-note pairs with accents (>) on the second note of each pair. A double bar line with repeat dots is located after the second measure.

System 6: A pair of staves. The top staff contains four measures of eighth-note pairs with accents (>) on the first note of each pair. The bottom staff contains four measures of eighth-note pairs with accents (>) on the second note of each pair. A double bar line with repeat dots is located after the second measure.

002.02

stickingpatterns.com



002.02

stickingpatterns.com

